

# EWR2 Project Newsletter

## Winter 2021/2022

Steeple Claydon & Verney Junction



EWR Alliance



# East West Rail Phase 2

## Project Newsletter



New track on Bletchley Flyover, January 2022

To read the electronic version of this newsletter, scan the QR Code:



**ATKINS**  
Member of the SNC-Lavalin Group



### Welcome

Welcome to the winter 2021/2022 issue of the EWR2 Project Newsletter. On behalf of the Alliance, I would like to wish you the very best for 2022, which will be another challenging but exciting year for the project.

This time last year we set out the objective to deliver most of the civil construction work, including the main earthworks, within 2021. I am pleased to advise that the project has successfully achieved these milestones and the overall programme remains on schedule to complete in 2024. From the 3rd quarter of this year the construction activity will decrease significantly and will be focused on installing the track and railway systems while also completing the stations at Winslow and Bletchley. Most of the bridge structures and the main earthworks will be complete and the reinstatement of our compounds and haul roads will have begun. As mentioned in previous newsletters, during the track construction we will predominantly use rail for the delivery of materials and so the number of will reduce from the 3rd quarter of this year.

The good progress in 2021 has not been without challenges and we remain acutely aware of the disruption the project has caused to the local community. Once again, on behalf of the Alliance I would like to apologise for the disruption the project has caused. Please be assured that we will continue our efforts to mitigate the disruption as much as possible. I would also like to thank everyone for their patience and feedback, as well as all those who have supported our various community consultation activities. In particular, thank you to the residents affected by the delayed reopening of Sandhill Road which turned out to be one of the key Covid challenges for the project during the year.

As you will read in the Project Progress section below, since the Autumn issue of our newsletter we have continued to make significant progress at our work sites, including Bletchley Flyover, where we have now installed over 1.5km of track over the flyover and surrounding area which will enable engineering trains to access the remainder of the project.

At the west end of the project, Charbridge Lane was successfully re-opened in early December which switched traffic onto a new road alignment whilst we continue to build the permanent southern approach to the new bridge. We hope to complete the final traffic diversion and fully open the road on its new permanent alignment in late summer.

I hope you enjoy reading more about the progress being made in this issue of the newsletter and as ever, thank you for your continued support and interest in the project.

**Mark Cuzner**, Alliance Director



## First engineering trains pass over the new Bletchley Flyover

In a hugely significant moment for the East West Rail project, the first engineering trains that will help build the track from Bletchley to Bicester were able to make their way across Bletchley Flyover in mid-January, the first time any locomotive has used the structure since it was closed to freight traffic in 1993.

The trains - delivering ballast stone to facilitate the track works - were the first of 434 such trains that will be used during this phase of the project.

This follows the completion of the structural works required to dismantle and rebuild sections of the flyover and the construction of a new 'box bridge' structure over the West Coast Main Line to bring the structure up to modern standards and increase its asset life from 60 to 120 years.

Track Project Leader, Joe Jamieson said "It's fantastic to see trains in operation across the new flyover. There has been a lot of hard work and effort across the entire Alliance to get us into this position and it's really rewarding to see the first trains in operation."

precast concrete components being installed for the two new platforms and staircases.



The Alliance construction team hand over the completed flyover to the track team in November 2021

As the work needed to be completed whilst the West Coast Main Line was closed, the first sections of track on the flyover were laid during Christmas Day and Boxing Day and the team have now installed over 1.5km of track in the area. In addition, in late January, our Signalling, Power & Communications (SP&C) team commissioned new signalling equipment which enables engineering trains to access the site without whilst the West Coast Main Line remains operational – meaning our works can continue to carry on without disruption to rail services.

Alliance Director, Mark Cuzner said: "The team has continued to make fantastic progress since we completed the rebuild of the Bletchley Flyover in October last year. Starting our track works on schedule is key to maintaining our programme as the engineering trains are booked months in advance.

"With the commissioning of the new rail in the Bicester area in mid-2020, It is now possible to signal trains into the project during operational hours at both the eastern and western fringes, which is key to our strategy to deliver as much of the materials to site via rail as possible – reducing our impact on the local road network and local residents."



Bletchley Flyover structural competition, November 2021. Image courtesy of Network Rail Air Ops



## Winslow Station works well underway

**The construction of the new Winslow Station is now well underway, with the two new platforms starting to take shape.**

Winslow station forms a key part of East West Rail, which will deliver vital transport connections for communities between Oxford and Cambridge and provide people with faster journeys and more affordable travel.

The station itself is located in the cutting of the original railway line closed in the 1960s and will include two platforms serving Oxford and Milton Keynes, with lift/footbridge access, as well as waiting shelters, toilets, cycle storage, customer information systems, CCTV and a new car park.

Preparatory works began in summer 2020, with activities including site clearance, de-vegetation and the installation of a drainage system needed to drain the water-logged cutting completed by the spring of 2021, when our earthworks contractors began the installation of the permanent drainage system and the strengthening the railway embankments, in preparation for track and the installation of sheet piling needed to support the construction of the new platforms, which is now well underway.

Outlining the work, David Ebdon, Project Manager for Winslow station explained: "The platforms themselves are constructed from over 500 pre-cast concrete units, delivered to site over a three-month period and lifted into place using a 250-tonne crawler crane located at the top of the cutting.

"On completion of the platforms and supporting works, we then move on to construction of the main station building and forecourt areas, which will take place between the spring and winter of this year, followed by installation of the station footbridge, plus construction of the car park which will run throughout 2023."

Overall construction of the new station building and platforms is scheduled for completion in spring 2023, with supporting track and signalling works running from late 2022 to late 2023.



Winslow Station Platforms under construction in December 2021

## Community engagement events in 2022



**Thank you to everyone who attended our Newton Longville community drop-in at the Free Church on Tuesday 25 January where the Alliance team answered questions from over 60 members of the local community.**

The drop-in is part of a planned schedule of community engagements that will take place throughout the year, including further compound open days following the successful event held in Winslow last year.

More details about other forthcoming events will follow in the next edition of the newsletter.

If you would like the team to visit your area, or join a regular community meeting, then please get in touch via [publicinformation@ewralliance.co.uk](mailto:publicinformation@ewralliance.co.uk)



## Grange Farm footbridge opens to the public

The new Grange Farm footbridge near Launton was successfully opened to the public on Friday 21 January, allowing for the re-opening of the Public Right of Way (PRoW) in the area and enabling local residents to safely cross the railway

Aligned to Network Rail's commitment to eliminate safety risks by removing level crossings where possible, the existing user-operated crossing and the supporting public right of way at Launton near Bicester was closed in March 2020 to allow the Alliance to create a temporary haul road that could be used by construction traffic serving the project.

The new footbridge is the second of ten to be installed along the line of route from Bicester to Bletchley and is constructed from weatherproof, fibre reinforced polymer, making it easier to maintain than conventional materials such as steel or concrete.

The installation works on the new footbridge began in Summer 2021, with the last few months spent carrying out works to the existing public rights of way, including introduction of way marker signs, gates and supporting footpaths.

The first of the ten new footbridges was officially opened to the public at Jarvis Lane in Bicester in October of last year, with the remaining eight scheduled for completion by this summer.



Launton Parish Councillor Simon Turner and Mel Banks, Project Leader for the EWR Alliance open the new bridge



## Public Rights of Way re-opening schedule

**We recognise that Public Rights of Way (PRoW) are an important resource for the community and seek to minimise closures of PRoWs where possible. In some instances, closures must be made to ensure public safety whilst works are undertaken, for example to divert watercourses and reroute PRoWs.**

The Alliance is seeking to reopen the PRoWs affected by the project as early as possible and again make them available to the community.

We have created an interactive guide to share information regarding each of the current and future PRoW closures, including guidance indicating when the PRoW is scheduled to re-open.

To view the guide, scan the QR code below on any internet-connected mobile device:



Please note, this information is subject to change and any closures/re-openings will be notified nearer the time by the Alliance via the local authorities as necessary.



## Second traffic switch at Charbridge Lane completes on time

One of the most significant construction activities in the area will be the new road bridge on Charbridge Lane, which is being constructed using multiple temporary road diversions to minimise disruption to the local community.

The EWR Alliance successfully completed the first temporary traffic diversion of Charbridge Lane in early 2021 to enable construction work for the new bridge to begin and for our earthworks contractors to construct the northern and southern approach embankments needed to connect the road network to the new structure.

In late 2021, a second traffic switch was put in place, allowing traffic to cross over the new bridge on a temporary road alignment. The team are now focused on completing the construction of the southern approach embankment and will complete the final traffic switch in spring 2022, when traffic will begin to use the new permanent road alignment.

Alliance Director Mark Cuzner said “Achieving the traffic diversions at Charbridge Lane has long been a critical milestone in our programme and our team at Charbridge Lane have done a fantastic job to meet those dates on schedule and with minimal disruption.

The Alliance remains on track to complete the final traffic switch and fully open the bridge in spring 2022.



The second traffic switch for the construction of the new Charbridge Lane overbridge was completed in late 2021



A CGI render of the new Charbridge Lane overbridge

## Mud on the Roads



**All EWR2 sites have provision for cleaning wheels of our construction vehicles before they enter the public highway. Unfortunately, during recent periods of adverse weather there have been instances of mud getting on to the public highway. We apologise for the nuisance this has caused to road users. We have implemented an improvement plan to address the issues and avoid further reoccurrence.**

We have also strengthened the road sweeping regime that is in operation around our sites. Our traffic marshals will also continue to monitor the condition of the roads and ensure the situation remains satisfactory.

The Alliance has been working closely with Buckinghamshire Council and their traffic ambassadors to manage this issue and we thank communities for their patience when allowing our road sweepers to clean areas.

If you would like to raise any issues you can do so via

[publicinformation@ewralliance.co.uk](mailto:publicinformation@ewralliance.co.uk) or  
the 24/7 Network Rail Helpline  
03457 11 41 41.



## Acoustic barriers installed two years early to help mitigate noise for local residents

**With the introduction of new rail services when the East West Rail line opens, naturally this will create noise for local residents whose properties are in the immediate vicinity of the railway.**

Through the development stage of the project, the EWR Alliance has carried out extensive acoustic surveys to determine locations where it is necessary to install acoustic barriers to reduce noise levels for those living in close proximity to the railway.

These surveys indicated that several locations along the line of the new route in Winslow, Verney Junction, Steeple Claydon and Bletchley would require the installation of acoustic barriers.

The barriers are required to be in place before train services commence, however, the Alliance has opted to install the barriers as early as possible so that residents can benefit from the potential noise reduction during the construction phase of the project.

Our specialist contractors Gramm Barrier Systems Ltd commenced installation of the barriers in late 2021 and works across the four areas identified is scheduled to complete during spring 2022.



EWR Company CEO Simon Blanchflower CBE with members of the Alliance and EWR Company outside Twyford Community Stores Cafe

## Thank you to Twyford Community Stores Cafe

**We would like to thank Twyford Community Stores Café for their hospitality during a project visit hosted by the EWR Alliance and EWR Company shortly before Christmas.**

EWR2 was hosting leaders from across the rail industry to provide an update on project progress. During the lunchtime stop at Twyford guests were treated to a delicious pit stop at the Twyford Community Stores Café, owned and operated by residents of the village, which provided an excellent opportunity to meet local residents and give something back to the community business.

Thanks to everyone at Twyford Community Stores Café for their warm welcome and hospitality.





## Alliance team muck in at Curly Tails Pig Sanctuary

As part of our ongoing commitment to leave a lasting social legacy during the delivery of the project, members of the Alliance and our earthworks supply chain partners recently spent an afternoon with volunteers at Curly Tails Pig Sanctuary in Newton Longville.

Putting their Personal Protective Equipment (PPE) and work boots to good use (and never being more thankful for their protection!), the team carried out some maintenance and tidying for the sanctuary, who rescue mistreated, neglected and abandoned pigs, or pet pigs whose owners can no longer care for them.

Since the sanctuary was established in 2016, Curly Tails has also become a learning, education and wellbeing centre, working with local schools, children's charities, additional needs centres, and respite centres for the elderly.

Tasks completed included gate repairs, clearing scrap and vegetation, and clearing old structures to enable the construction of new buildings at the sanctuary.

Alliance Deputy Director, Mark James said: "Despite the challenging conditions, it was a really enjoyable afternoon spent learning about the fantastic work Curly Tails and their volunteers do, and enjoying the charming company of the pigs, who definitely kept us all entertained!

"We hope to return in the future to help restore paths and connect running water, and hope to be able to re-use materials from the project once we begin to demobilise our compounds."

If you have any community events or projects we might be able to help with, please contact us via [publicinformation@ewralliance.co.uk](mailto:publicinformation@ewralliance.co.uk)



Members of the team with donations collected from our main project office in Milton Keynes

## £1000 Christmas collection for food banks in Buckinghamshire & Oxfordshire

Continuing its work with local food banks, in the lead up to the Christmas period, the Alliance and its supply chain partners organised a collection for the MK Food Bank in Buckinghamshire and Bicester Food Bank in Oxfordshire for the two organisations to distribute to those in need across the two counties.

Across the Alliance compounds and project offices, nearly £1000 worth of donations were collected for the two organisations, including essential items such as tinned and jarred goods, cereal and porridge, dried pasta as well as Christmas treats and sweets.



## Progress in your area – Steeple Claydon & Verney Junction

The coded maps in this section mark out areas of Steeple Claydon & Verney Junction where we will be working. Use the numbers to find out what is happening in each area, and what activity is coming up in the next three months.

### Steeple Claydon



## 1 & 2. Queen Catherine Road overbridge works

**Description:** We will build a new road bridge to provide access over the railway line enabling the removal of the current level crossing on Queen Catherine Road.

**Duration:** Work started in winter 2020 and is due for completion in the summer of 2022.

**Disruption:** There will be some partial road closures as we build the access to the site of the new bridge and realign with existing highway. For details of the road closures please visit [one.network](#). Appropriate signage will also be displayed.

**Recent progress:** We have constructed the new bridge deck and are continuing the construction of the embankments that will form the approaches to the new structure.

**Upcoming Activity:** We will continue the construction of the approach embankments to the bridge.

## 3 & 8. Railway works

We have begun preparing the formation for the new railway to be constructed in these areas. The formation provides the ground upon which the new railway will be installed, consisting of earthworks and drainage installation. The installation of the track is due to begin in early 2023. Furthermore, installation of the acoustic barriers to the rear of the Station Cottages at Queen Catherine Road will commence in the spring of 2022.

## 4. Queen Catherine Road, Steeple Claydon Compound construction

**Description:** We have built a construction compound to provide staff welfare and material storage. This compound will also provide an entrance for the construction of the new overbridge and will facilitate the main earthworks required in the area.

**Duration:** Once work in the area has been completed the site will be re-instated to its former condition in late 2022.

## 5. Queen Catherine Road Level Crossing Works

**Description:** When the new Queen Catherine Road overbridge comes into use, the existing level crossing will be removed which will allow us to build the new railway.

**Duration:** Work will take place during summer 2022.

**Disruption:** None for this specific activity.

## 6. Queen Catherine Road utility works

**Description:** We have installed a new electrical cable along the road and have diverted the existing overhead power lines within the compound on Queen Catherine Road underground to enable construction of the embankments needed to connect the road to the new bridge.

**Recent progress:** The installation of the new electrical cable and diversion of the overhead power lines by Western Power Distribution is now complete.

## 7. Haul Road construction

**Description:** We have constructed a new haul road which will allow us to move our construction vehicles and machinery from the compound on Queen Catherine Road along the railway, keeping these vehicles away from local roads. This haul road will be removed and reinstated to its original condition in the summer of 2022, following completion of the earthworks in this area.

## 9. Middle Claydon footbridge construction

**Description:** We are building a new footbridge to allow people to cross the new railway safely.

**Duration:** Work started in winter 2020 and is due for completion in summer 2022.

**Disruption:** The existing footpath will be temporarily closed whilst the new footbridge is constructed, and whilst the earthworks required in this area are completed.

**Recent progress:** No further works have been undertaken to the footbridge in the last period, due to ongoing earthworks in this area.

**Upcoming Activity:** The new footbridge will be installed in the summer of 2022.

## 10. Environmental Compensation Site

These sites have been established to mitigate our impact on the local ecology. They include the creation of aquatic habitat features like river back waters, grasslands, scrub and woodland with specific species and features for badger, otter, reptiles, great crested newts, bats, butterflies etc.



## Progress in your area – Steeple Claydon & Verney Junction

The coded maps in this section mark out areas of Steeple Claydon & Verney Junction where we will be working. Use the numbers to find out what is happening in each area, and what activity is coming up in the next three months.

### Verney Junction



## 1. Middle Claydon footbridge construction

**Description:** We will build a new footbridge to allow people to cross the new railway safely.

**Duration:** Work started in winter 2020 and is due for completion in the summer of 2022.

**Disruption:** The existing footpath will be temporarily closed whilst the new footbridge is constructed and whilst the earthworks required in this area are completed.

**Recent progress:** No further works have been undertaken to the footbridge in the last period, due to ongoing earthworks in this area.

**Upcoming Activity:** The new footbridge will be installed in the summer of 2022.

## 2, 3, 4 & 5. Environmental Compensation Sites

These sites have been established to mitigate our impact on the local ecology. They include the creation of aquatic habitat features like river back waters, grasslands, scrub and woodland with specific species and features for badger, otter, reptiles, great crested newts, bats, butterflies etc.

## 6. Sandhill Road overbridge repairs

**Description:** We have refurbished the existing Sandhill Road bridge. Works included strengthening works to the existing bridge abutments, replacement of the existing bridge deck, waterproofing, gas pipe replacement, new approach embankments and resurfacing of the carriageway.

**Duration:** Work started in winter 2020 and was completed in autumn 2021.

**Disruption:** We closed Sandhill Road whilst the existing bridge deck was demolished and replaced, and whilst the existing gas main is strengthened.

**Recent progress:** We completed construction of the new bridge deck, waterproofing and tarmac surfacing of the new bridge and re-opened the road to traffic in the autumn of 2021. We have also commenced construction of the new maintenance compound and access road to the South-West of the bridge.

**Upcoming Activity:** Minor finishing works are being completed to the bridge. Construction of the maintenance access compound is due to be completed in early 2022.

## 7. Railway works

In spring 2021 we began preparing the formation for the new railway to be constructed in these areas. The formation provides the ground upon which the new railway will be installed, consisting of earthworks and drainage installation. The installation of the track is due to begin in early 2023.

## 8 & 9. Verney Junction compound construction and access

**Description:** We have built a construction compound to facilitate the new bridge construction at Verney Junction and the main earthworks required in the area, providing staff welfare and material storage facilities.

**Duration:** Once work in this area has been completed the site will be reinstated to its former condition in the summer of 2023. Some reinstatement works will commence in late 2022.

**Disruption:** There will be an increase in construction traffic throughout the work. All road closures will be published on [one.network](#) and appropriate signage will be displayed.

## 10. Verney Junction overbridge construction

**Description:** We are building a new road bridge over the new railway line which will replace the existing crossing at Littleworth Farm.

**Duration:** Work started in early 2021 and is due for completion by the autumn of 2022.

**Disruption:** There will be an increase in construction traffic during the construction period, however, we are building the structure away from the existing highway to minimise disruption to the local community and minimise impact on Littleworth Farm.

**Recent progress:** We have installed the main precast concrete bridge beams and continued the construction of the embankments that will form the approaches to the new structure.

**Upcoming Activity:** We will complete the construction of the approach embankments and the new bridge deck in the spring of 2022.

## 11. Addington Brook and Verney Road underbridge repairs

**Description:** We are refurbishing the existing bridge over Addington Brook on Verney Road. Work will include new waterproofing, brickwork repairs and installing new handrails.

**Duration:** Work started in summer 2020 and is due for completion in late 2022.

**Disruption:** There will be temporary road closures and/or traffic management in place while the repair work is carried out. All closures will be publicised on [one.network](#) and appropriate signage will be displayed.

**Recent progress:** No further work has been carried out to the bridge in the last period, due to ongoing earthworks in this area.

**Upcoming Activity:** Further upgrade work will be carried out in the spring of 2022.

## 12. Acoustic barriers

We will commence installation of the acoustic barriers to the rear of the existing properties at Verney Junction in early 2022.

→ For any queries or questions please contact us on: [publicinformation@ewralliance.co.uk](mailto:publicinformation@ewralliance.co.uk)







## EWR2 Earthworks - Winter 2021/2022 update

The Alliance's earthworks programme is now well-advanced – a critical component in the successful delivery of the project.

This involves preparing and forming the circa 1 million m3 of earthworks required for the construction of the railway infrastructure and track, for example by creating embankments, slopes and cuttings needed to facilitate the passage of trains.

The earthworks programme is being delivered by our two specialist contractors, J Murphy & Sons and Buckingham Group Contracting Ltd, who are operating out of the construction compounds we have established along the route. J Murphy & Sons (JMS) will be responsible for the delivery of the earthworks at the eastern end of the project between Bletchley and Verney Junction–whilst Buckingham Group (BGCL) are responsible for the delivery of earthworks on the western side of the project between Bicester and Verney Junction.

### Progress Update

Since the last issue of the newsletter, the earthworks contractors have now handed back 10 of the 25 worksites to the Alliance, including the completion of earthworks from Bletchley flyover through to Salden Wood, which has enabled us to start the construction of track in the area on programme.

To summarise progress across our earthworks programme:

- Buckingham Group:
  - The first phase of the earthworks at Station Road, Launton overbridge has been completed and handed to the highways team to progress ahead of the opening of the bridge.
  - At Charbridge Lane overbridge, the traffic switch onto a new temporary road alignment was completed in late 2021 and we have started on the second phase of earthworks for the structure, which involves building the embankment which will form the southern approach to the new bridge. These works are due to complete in spring 2022, when the bridge will open to road traffic on its new permanent road alignment.
  - 8km of trackbed (the surface upon which the new track will be installed) has been completed at our Poundon/Marsh Compound and Green Lane, Twyford Compound.
  - The backfill at Queen Catherine Road overbridge and Verney Road overbridge is substantially complete.
- John Murphy & Sons:
  - A total of 13km of trackbed has been installed in various areas of the project in Murphy's control. There remains 2km of trackbed left to complete around Verney Junction, which will be complete by spring 2022.
  - All of the track drainage has been installed. This will prevent the trackbed becoming waterlogged through the winter period.
  - At Salden Wood the earthworks for the new overbridge have been handed over to the utilities and highways team to complete their works ahead of the bridge opening to road traffic in spring 2022.
  - All of the culverts and under track crossings in J Murphy & Sons' scope have been installed.

The good weather we have experienced in recent weeks, combined with the Section 61 consent we have gratefully had supported in Newton Longville – Mursley to extend our working hours has meant we have been able to recover some of our late start and our teams are now regularly over-achieving on our planned volumes overall.



Read the interactive, electronic version of this newsletter by scanning the QR Code:



## Localised Earthworks Updates

The list below provides a summary of our earthworks programme across the project:

### Charbridge Lane overbridge

**Description:** As part of our works to construct the new overbridge at Charbridge Lane, our earthworks contractor will create the bridge approach embankments.

**Duration:** Late spring 2021 to early 2022.

**Likely disruption:** Residents will continue to see increased construction traffic as the bridge is constructed. All closures will be publicised on [one.network](#) and appropriate signage will be displayed.

**Supply Chain Partner:** BGCL.

### Charbridge Lane to Station Road, Launton

**Description:** Our earthworks contractor will be widening the rail corridor, installing drainage and constructing the track bed for the new EWR2 track to be installed.

**Duration:** Earthworks in this area are due to commence late spring 2021 and will complete in early 2022.

**Likely disruption:** No disruption to local residents is anticipated due to works being restricted to the disused railway line. However, plant and vehicle movements will be visible from surrounding areas.

**Supply Chain Partner:** BGCL.

### Station Road overbridge, Launton

**Description:** As part of our works to construct the new bridge structure at Station Road, Launton, our earthworks contractor will create the bridge approach embankments.

**Duration:** Late spring 2021 to early 2022 (Please note: this duration reflects earthworks programme and not the entire length of the Station Road, Launton road closure currently in place, which will continue until spring 2022).

**Likely disruption:** Earthworks for this activity is not anticipated to be the cause of disruption, however – as above, Station Road Launton will be closed until spring 2022. For more information, please refer to the Station Road update in the Bicester & Launton section of the [newsletter](#).

**Supply Chain Partner:** BGCL.

### East of Station Road, Launton – Station Road, Marsh Gibbon

**Description:** Our Earthworks contractor will be using the existing railway line to transport materials to be placed within Station Road overbridge, as well as widening the rail corridor, installing drainage and constructing the track bed for the new EWR2 track to be installed.

**Duration:** Spring 2021 to spring 2022.

**Likely disruption:** We anticipate there will be minor disruptions to journeys as a result of a general increase in construction traffic at Station Road and Bicester Road north of Marsh Gibbon. No specific disruption is anticipated as a result of the construction works along the railway corridor with the exception of a small number of dwellings close to the railway who may be able to hear the works taking place during working hours.

**Supply Chain Partner:** BGCL.

### Station Road, Marsh Gibbon to Main Street, Charndon

**Description:** Our earthworks contractor will be widening the rail corridor, installing drainage and constructing the track bed in this area.

**Duration:** Spring 2021 – spring 2022.

**Likely disruption:** No specific disruption is anticipated during the

construction works along the railway corridor, however, there will be at times road closures required to facilitate bridge repairs. You can find out more about these closures in the Marsh Gibbon, Poundon, Charndon & Twyford Progress update section of this [newsletter](#).

**Supply Chain Partner:** BGCL

### Queen Catherine Road overbridge

**Description:** As part of our works to construct a new bridge at Queen Catherine Road, our earthworks contractor will create the bridge approach embankments.

**Duration:** Spring 2021 – summer 2022 (Please note this is the total bridge duration, however, the earthworks is anticipated to finish sooner).

**Likely disruption:** Expected disruption to local residents will include noise, dust and vibration from plant movements and material handling. We will implement a range of control measures to minimise impacts as much as possible and our works will be discussed on a monthly basis with Buckinghamshire Council Environmental Health Consultant.

**Supply Chain Partner:** BGCL.

### Queen Catherine Road to Verney Junction

**Description:** Our Earthworks contractor will be using the existing railway line to transport materials to be placed within Queen Catherine Road overbridge as well as widening the rail corridor, installing drainage and constructing the track bed upon which the new EWR2 track will be installed.

**Duration:** Spring 2021 – summer 2022.

**Likely disruption:** Expected disruption to local residents will include noise and dust from plant movements. We will implement a range of control measures to minimise impacts as much as possible and our works will be discussed on a monthly basis with Buckinghamshire Council Environmental Health Consultant.

**Supply Chain Partner:** BGCL.

### Verney Junction overbridge north approach

**Description:** As part of our works to construct a new bridge at Verney Junction, our earthworks contractor will create the bridge approach embankments.

**Duration:** Spring 2021 – spring 2022.

**Likely disruption:** Expected disruption to local residents will be noise and dust from plant movements. EWRA will implement a range of control measures to minimise impacts as much as possible and works discussed on a monthly basis with Buckinghamshire Council Environmental Health Consultant.

**Supply Chain Partner:** BGCL.

### Verney Junction overbridge south approach

**Description:** As part of our works to construct a new bridge at Verney Junction, our earthworks contractor will create the bridge approach embankments.

**Duration:** Spring 2021 – spring 2022.

**Likely disruption:** Expected disruption to local residents will be noise and dust from plant movements. EWRA will implement a range of control measures to minimise impacts as much as possible and works discussed on a monthly basis with Buckinghamshire Council Environmental Health Consultant.

**Supply Chain Partner:** JMS.





## Verney Junction overbridge to Furze Lane Compound

**Description:** Earthworks in this area has already begun with the construction of the track bed that will provide the foundation for the EWR2 track to be constructed upon.

**Duration:** Spring 2021 – spring 2022.

**Likely disruption:** Expected disruption to local residents will include noise, vibration and dust from plant movements. EWRA will implement a range of control measures to minimise impacts as much as possible and works discussed on a monthly basis with Buckinghamshire Council Environmental Health Consultant.

**Supply Chain Partner:** JMS.

## Winslow New Station to Furze Lane Compound

**Description:** Our earthworks contractor has completed the earthworks required for the construction of the new station at Winslow, however, earthworks between the new Winslow station and Furze Lane are ongoing. Our Utilities contractor has begun diverting various utilities within this area.

**Duration:** Spring 2021 – spring 2022.

**Likely disruption:** Expected disruption to local residents will include noise, vibration and dust from plant movements. Other works, including sheet piling, will be taking place at this location, associated with the construction of Winslow Station and the new Station Platforms, where similar disruption is possible. EWRA will implement a range of control measures to minimise impacts as much as possible and works discussed on a monthly basis with Buckinghamshire Council Environmental Health Consultant.

**Supply Chain Partner:** JMS.

## Furze Lane Compound to Station Road, Swanbourne Compound

**Description:** Our earthworks contractor has begun excavation and fill works within this section has removed the old Winslow Station platforms ready for the installation of the new platforms, which began in late 2021. Track bed and drainage construction will also be taking place throughout this section.

**Duration:** Spring 2021 – spring 2022.

**Likely disruption:** Expected disruption to local residents will include noise, vibration and dust from plant movements. EWRA will implement a range of control measures to minimise impacts as much as possible and works discussed on a monthly basis with Buckinghamshire Council Environmental Health Consultant.

**Supply Chain Partner:** JMS.

## Whaddon Road, Newton Longville to Station Road, Swanbourne Compound

**Description:** Our earthworks contractor has completed the construction of the drainage and track bed works for rail corridor widening that will provide the foundation for the EWR2 track to be constructed upon.

**Duration:** Work began in spring 2021 and was completed in late autumn.

**Likely disruption:** Some disruption from noise and dust is possible for the few properties in the vicinity of the Swanbourne compound, otherwise, no specific nuisances are anticipated during the construction works along the railway corridor with the exception of a small number of dwellings close to the railway. Control measures will be applied where possible to minimise impacts.

**Supply Chain Partner:** JMS.

## Whaddon Road, Newton Longville to Wellington Place Compound

**Description:** Our earthworks contractor has completed the construction of the retaining wall for embankment retention to facilitate the required track bed construction; this involves driving steel piles into the ground

and placing precast concrete planks in between. Track bed construction and embankment regrading will also be taking place in this section.

**Duration:** Work began in spring 2021 and was completed in late autumn 2021.

**Likely disruption:** During piling and earthworks operations, disruption to local residents is likely to include noise, dust and vibration. We will implement a range of control measures to minimise impacts where possible and will review works regularly with Buckinghamshire and Milton Keynes Councils.

**Supply Chain Partner:** JMS.

## Wellington Place Compound to Bletchley North/Saxon Street

**Description:** Our earthworks contractor has now completed works in this area - widening the rail corridor, installing drainage, and constructing the track bed.

**Duration:** Work began in summer 2021 and was completed in autumn 2021.

**Supply Chain Partner:** JMS.

## Mitigating Disruption

To minimise disruption for local residents we have worked with our supply chain partners to plan the works with the community in mind, sequencing the works in such a way so as to reduce our impact wherever possible.

EWR Alliance Traffic Ambassadors are also monitoring our earthworks contractor's vehicles to monitor compliance and driver behaviour.

In addition:

- Our earthworks supply chain partners are utilising the network of 'haul roads' that have been constructed to allow construction traffic to move between various areas of the project without using the local road network wherever possible.
- We aim to re-use 100% of all materials on the project, meaning we are re-using excavated earth elsewhere on the project wherever possible – reducing the amount of deliveries required, reducing our use of the local road network and helping us achieve our environmental targets.
- We are using the latest, modern construction plant and machinery in order to minimise noise and idling plant.
- We are adhering to the agreed working hours (07:00 – 18:00 Monday – Friday, 07:00 – 16:00 Saturday) and will apply for Section 61 consent from Local Authorities where works are required to take place outside of these working hours. We are also meeting with the relevant Local Authorities regularly to discuss the works programme.
- We are regularly monitor dust, noise and vibration levels throughout our earthworks programme.
- Our earthworks contractors are utilising wheel washes installed at our construction compounds to reduce mud and dust deposited onto local roads.
- We will employ road sweepers to keep the local roads to and from our construction compounds clean.
- Towable bowsers and other dust suppression methods will be employed to limit the emission of dust from works activities and plant movements.

As with all our works, any road closures associated with our earthworks programme will be publicised on [one.network](#) and appropriate signage will be displayed.

If you experience any issues or would like to raise a complaint, please email [publicinformation@ewralliance.co.uk](mailto:publicinformation@ewralliance.co.uk) or, contact the Network Rail Helpline 24/7 on 0345 711 4141.



## EWR2 Highways works – Winter 2021/2022 update

As we continue to build the new railway infrastructure, residents and local businesses will see an increase in the levels of construction traffic in the area. In addition, carrying out our work may mean there is some temporary disruption, with partial and full road closures required in some circumstances to accommodate our works and keep our workforce and the general public safe.

The list of activities below indicates where we will be carrying out highways works across the length of the project, including maps to indicate where works will be taking place.

### Notification of planned highways works

All road closures across the project are notified in advance via [one.network](#), a free platform used by local and national highways authorities to provide information on planned roadworks. User friendly and free-to-view, users can register for email alerts about upcoming roadworks affecting their area. Of course, we will continue to display physical signage in the local area to advise of upcoming works.

### Logistics management

The Alliance has appointed several Traffic Ambassadors. The Ambassadors continue to monitor the performance of the project's traffic flows and report any issues they observe in real time to our Logistics and Construction Managers for immediate action.

In addition, the Ambassadors monitor delivery vehicles to ensure they comply with requirement to display EWR2 identification, and to ensure EWR2 construction vehicles stick to the approved construction routes for the project. Finally, they monitor driving behaviours to ensure compliance with our driving policies and the expected driving behaviours.

Our ambassadors are identifiable by their hi-vis EWRA branded jackets and EWRA labelled vehicles.

**ATKINS**  
Member of the SNC-Lavalin Group



Read the interactive, electronic version of this newsletter by scanning the QR Code:





## EWR2 Highways works - east

### 1. Little Horwood Road – permanent Network Rail Access point and power connection works

**Description:** A permanent access point will be constructed for a permanent Network Rail compound. This is to allow maintenance work to be carried out to the railway once it is operational.

**Duration:** Network Rail Access – mid 2022.

### 2. Whaddon Road, Newton Longville – accesses and utility diversions

**Description:** Permanent accesses will be constructed, and the haul road crossing will be removed when our nearby compound is demobilised.

**Duration:** The new permanent accesses will be constructed autumn – summer 2022.

### 3. Salden Lane – Surfacing repairs & maintenance, we will surface the new structure and utility diversions over new Salden Wood overbridge.

**Description:** Road construction, surfacing works and utility works have started on the new Salden Wood bridge which crosses the railway.

**Duration:** Late 2021 – spring 2022.

### 4. Bletchley Road – Network Rail access point

**Description:** A permanent Network Rail access point will be constructed, which will allow access onto the railway for future maintenance work.

**Duration:** The access point will be constructed in the spring of 2022.

### 5. Station Road Mursley – Vehicle restraint system and surfacing works

**Description:** The bridge works have now been completed. The compound access will be removed and an access point for the railway will be constructed later this year.

**Duration:** Summer-autumn 2022.

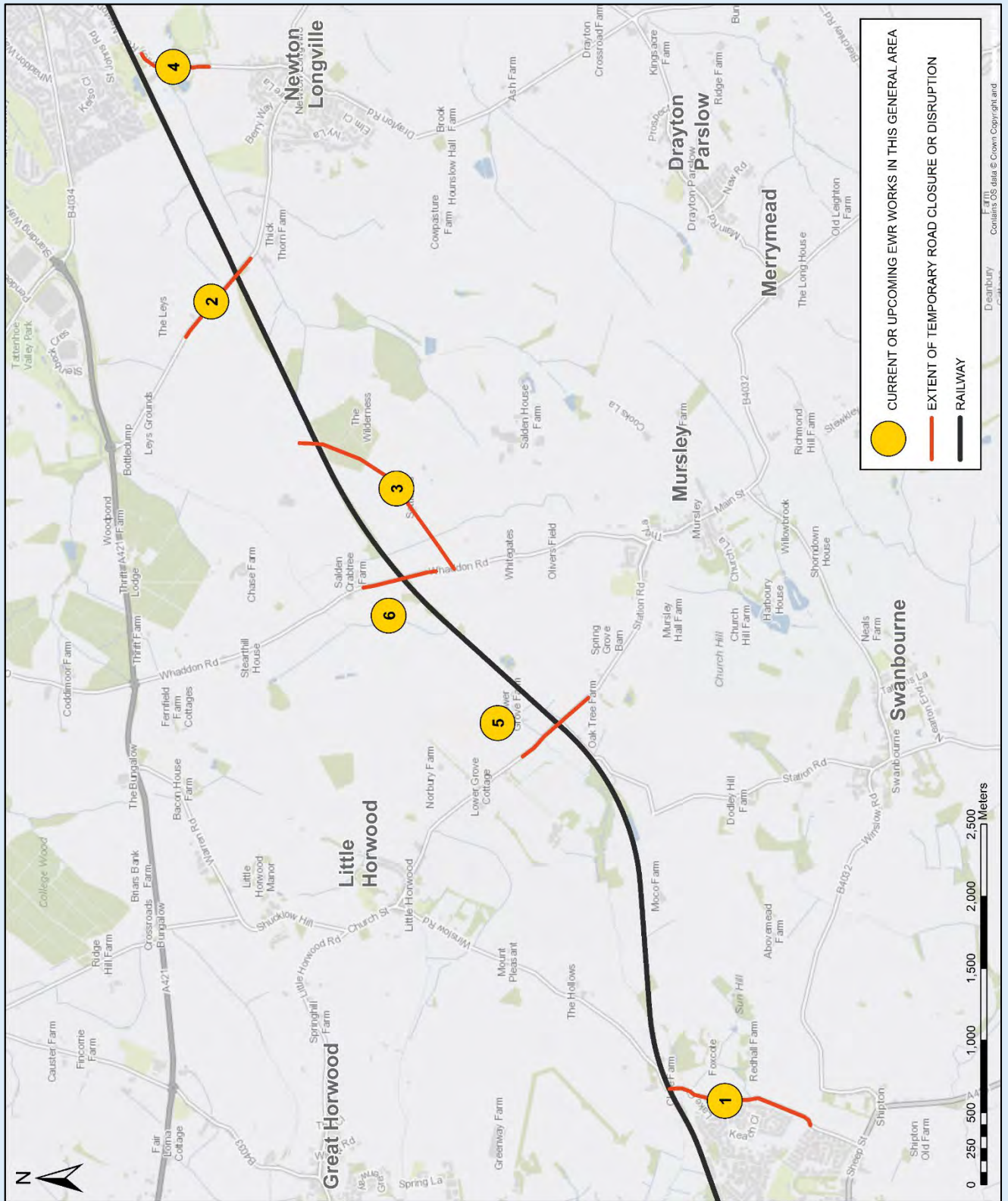
### 6. Whaddon Road, Mursley – surfacing bridge structural works

**Description:** Once the Whaddon Road structural work is complete the road will be surfaced.

**Duration:** The current road closure will remain in place until spring 2022.



## EWR2 Highways works - east







## EWR2 Highways works - central

### 1. The Spinney, Steeple Claydon – junction improvement

**Description:** Work to the junction around the Spinney has been carried out to make a one-way system allowing HGV lorries to travel around the island safely and not come into conflict with other vehicles which is required to meet highways regulations.

### 2. Queen Catherine Road – surfacing of new bridge

**Description:** The new bridge on Queen Catherine Road will need surfacing and will need to be connected to the existing road. In addition, there are utility diversions required for the new bridge.

**Duration:** Surfacing and highway tie ins for new bridge – spring - summer 2022.

### 3. Sandhill Road – New surfacing over bridge and utility diversions

**Description:** The road surfacing and utility diversion works have been completed for the Sandhill Road bridge.

### 4. Verney Road –Utility connections

**Description:** We have established utility connections to the nearby EWRA compound.

### 5. Furze Lane – bridge surfacing and protection works

**Description:** Once the bridge at Furze Lane is refurbished the road on top of the structure will be resurfaced.

**Duration:** Autumn 2022.

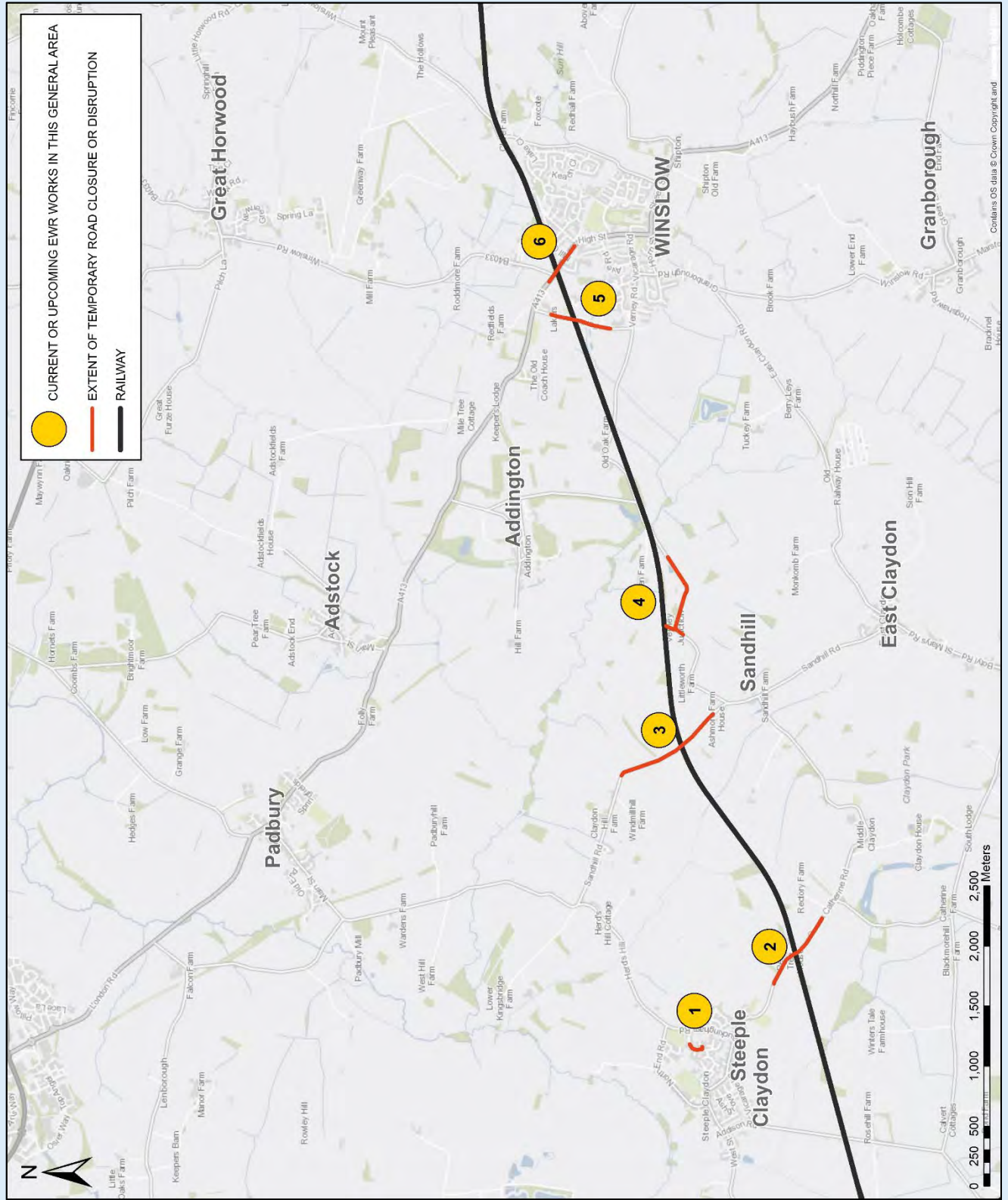
### 6. Buckingham Road – Highway/Rail Fencing Works

**Description:** A fence to the north of Buckingham Road bridge will be erected.

**Duration:** Summer 2022.



## EWR2 Highways works - central





## EWR2 Highways works - west

### 1. A4421 - junction works

**Description:** Changes to the A4421 junction alignment were completed earlier in 2021.

### 2. Charbridge Lane

**Description:** One of the most significant construction activities in the area will be the new road bridge on Charbridge Lane, which is being constructed using multiple temporary road diversions to minimise disruption to the local community.

The EWR Alliance successfully completed the first temporary traffic diversion of Charbridge Lane around the site for the new bridge structure in early 2021. A second traffic switch onto a second, temporary diversion route was put in place in late 2022 and will remain in place until the southern approach to the bridge is complete and traffic is switched on to the new permanent road alignment in spring 2022.

For a full update, please see the Bicester & Launton section of the [newsletter](#).

### 3. Bicester Road, Launton – surfacing of bridge works

**Description:** Surfacing works will be required after the refurbishment works on the Bicester Road, Launton structure are complete.

### 4. Station Road crossing and overbridge, Launton

**Description:** As part of our works, the existing level crossing at Station Road will be replaced with a road bridge, providing road users with a bridge over the new railway. For more information on this, please see the Bicester & Launton section of the [newsletter](#).

**Duration:** The construction of the bridge started in summer 2020 and is still due for completion in summer of 2022.

**Disruption:** Station Road near Launton closed earlier in the year and will remain closed until spring 2022. A diversion has been put in place. Details of the closure and diversion are also available on [one.network](#).

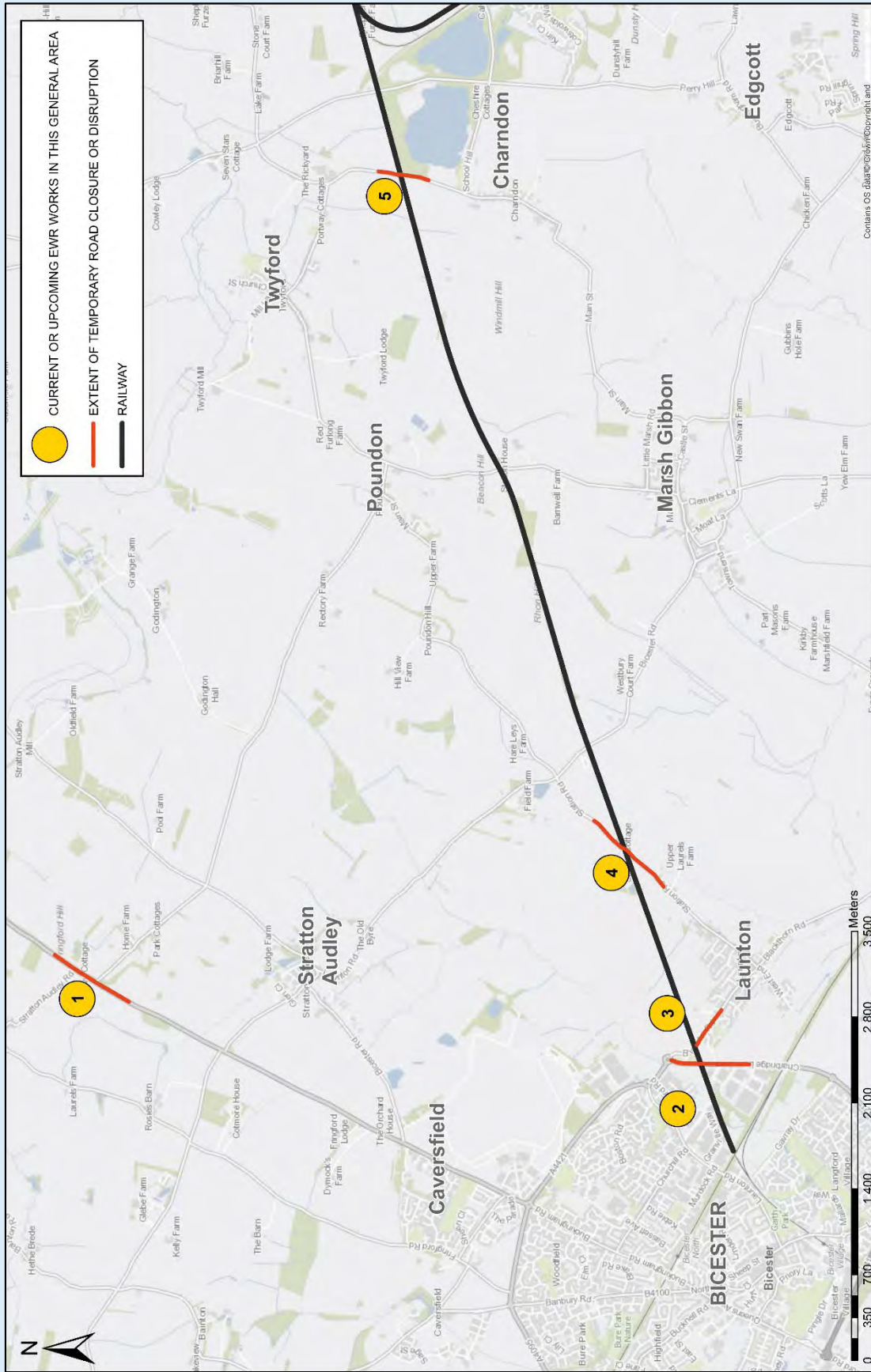
### 5. Charndon Lane – surfacing bridge works

**Description:** Surfacing have been completed at this location.





## EWR2 Highways works - west





**EWR Alliance working for Network Rail on behalf of the East West Railway Company**